

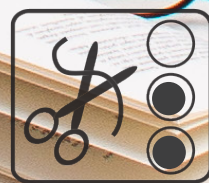
#proud2craft  
#mezfabrics

mez fabrics



## Floor Cushion

Free Design





# Floor Cushion Mandala Fantasy

**Difficulty level:** Advanced

**Finished size:** Approx. 50 x 50 x 19 cm

Fabrics from the collection "Mandala Fantasy" by MEZfabrics, 100% cotton, approx. 146 cm fabric width

**Note:** All measurements include a seam allowance of 0.75 cm unless otherwise indicated.

## Materials:

Fabric A: C130929-03009 MANDALA FANTASY-TWINE-BERRY	30 x 30 cm
Fabric B: C130927-03009 MANDALA FANTASY-PAISLEY-BLUE	30 cm
Fabric C: C130929-03010 MANDALA FANTASY-TWINE-BLUE	45 cm
Fabric D: C130931-03028 MANDALA FANTASY-SPOTS-BERRY	30 x 30 cm
Fabric E: C130931-03029 MANDALA FANTASY-SPOTS-BLUE	30 cm
For the cushion insert: 125 cm muslin, 110 cm wide	
Fusible polyester batting H640, 90 cm wide, by Freudenberg:	155 cm
MEZ Duet sewing thread in a matching colour	
1 zip in a matching colour, 60 cm long from Opti	
Ca 50 Liter EPS-beads (Polystyrene beads)	

## Cutting instructions

For the cushion cover:

Fabric A: Top: 1 square 27.5 x 27.5 cm

Fabric B: Top: 1 square 27.5 x 27.5 cm

Sides: 4 strips 6.5 x 21 cm

Handles: 2 strips 13 x 32 cm

Fabric C:

Top: 1 square 27.5 x 27.5 cm

Sides: 4 rectangles 46.5 x 21 cm

Fabric D:

Top: 1 square 27.5 x 27.5 cm

Fabric E:

Cushion base: 1 rectangle 51.5 x 29.5 cm

1 rectangle 51.5 x 28 cm

Batting

1 square 51.5 x 51.5 cm (cushion top)

1 rectangle 51.5 x 25.75 cm (cushion base)

1 rectangle 51.5 x 27.25 cm (cushion base)

2 rectangles 100 x 21 cm (sides)

2 Streifen 13 x 32 cm (handles)

For the cushion insert

2 squares 51.5 x 51.5 cm

4 rectangles 51.5 x 21 cm

Fig. 1

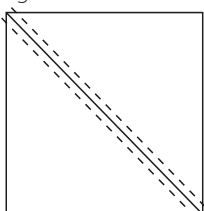


Fig. 2

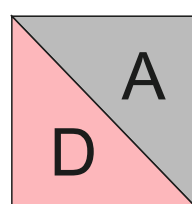
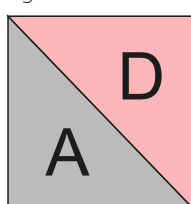
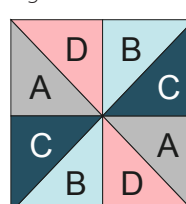


Fig. 3



**Note:** The EPS beads compact over time and should be replenished every so often. Simply carefully open the handstitching on the cushion insert, add more beads and close again.

## Sewing instructions

1. Cushion Top: Mark a diagonal line on the back of one square A. Place square A right sides together on a square D. Stitch together with 0.75 cm seam allowance on either side of the marked line (Fig. 1) Cut apart along the marked line, creating two half-square triangles (HSTs) A/D (Fig 2). Press the seam towards the darker fabric. Repeat these steps with squares B and C.

2. Join all the HSTs together as shown in Fig. 3 into 2 rows of 2 blocks, then join the rows together to complete the cushion top, paying attention to the rotation of the triangles. Fuse the batting square to the wrong side of the pieced cushion top.

### Cushion cover:

3. Prepare handles: first fuse the batting strips to the wrong side of the corresponding 13 x 32 cm B strips. Fold the strips in half lengthwise, right sides together. Stitch along the open edges, leaving an opening of ca 7 cm in the centre of the long side for turning. Clip the seam allowances at the corners. Turn handles, and press the seam allowance at the opening neatly inside. Edgestitch around all sides.

4. Prepare the cushion base: Fuse the batting rectangles to the corresponding E rectangles, lining up the short and one long edge. A strip approximately 2.25 cm wide should be left free along the second long side. Turn under the long sides without batting, first 0.75 cm then again 1.5 cm, press well and edge stitch. Position the slightly wider rectangle so that the hemmed long side is precisely on the centre of the zip and attach to the zip with 0.5 cm seam allowance. Place the second base rectangle with the hemmed side over the zip, overlapping the hemmed edge of the first rectangle by 1.5 cm. Stitch down as close as possible to the zip teeth. Trim away excess zipper tape.

5. Sew the side rectangles C and strips B together to form one long strip. Butt together two short edges of the fusible batting strips and join by hand with a mattress stitch, to create one long strip. Fuse to the wrong side of the fabric strip, leaving the raw seam allowances at the short ends free. Centre one handle each on two opposite C rectangles, and attach them, stitching over the previous edgestitching. Stitch the strip together along the short raw edges, creating a ring. Mark the centres of the narrow B strips on both sides of the ring.

6. Attach the cushion top to the side ring, matching the corners of the top to the marked centres of the C strips. Start and end each seam 0.75 cm away from each corner, backstitching at each end to secure. Finish all seams.

7. Attach the cushion base in the same way, first making sure that the zip is half open to enable turning.

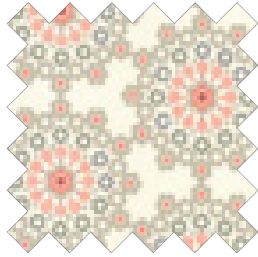
8. Turn cushion cover right sides out. Open zip completely, put cushion insert inside cushion cover, close zip.

### Cushion insert:

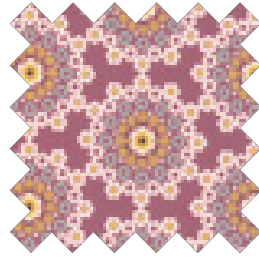
1. Make the cushion insert in the same way as the cushion cover is completed, using the two squares for top and base and the four rectangles for the side ring. Leave ca 20 cm along one seam between cushion base and side open for turning and filling. Turn cushion insert right sides out and loosely fill with EPS beads. Close the opening by hand.

# Mandala Fantasy Collection

100% Cotton, fabric width approx. 146 cm



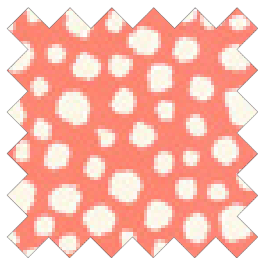
C130928-03011



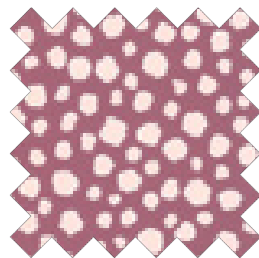
C130928-03008



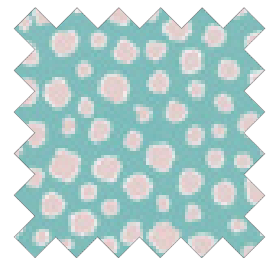
C130928-03009



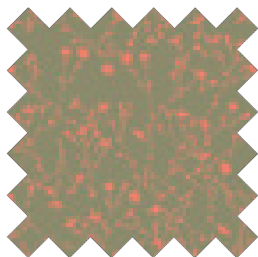
C130931-03030



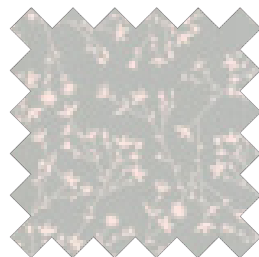
C130931-03028



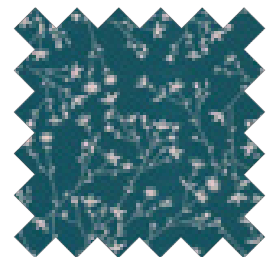
C130931-03029



C130929-03012



C130929-03009



C130929-03010



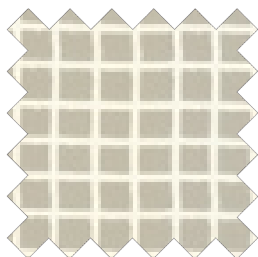
C130926-03003



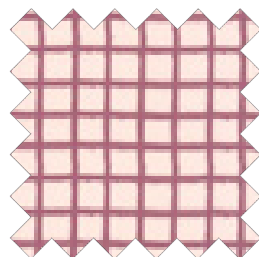
C130927-03007



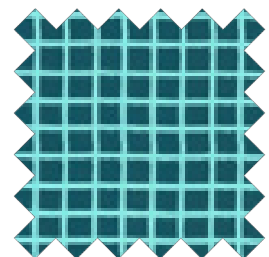
C130927-03009



C130930-03013



C130930-03007



C130930-03009